



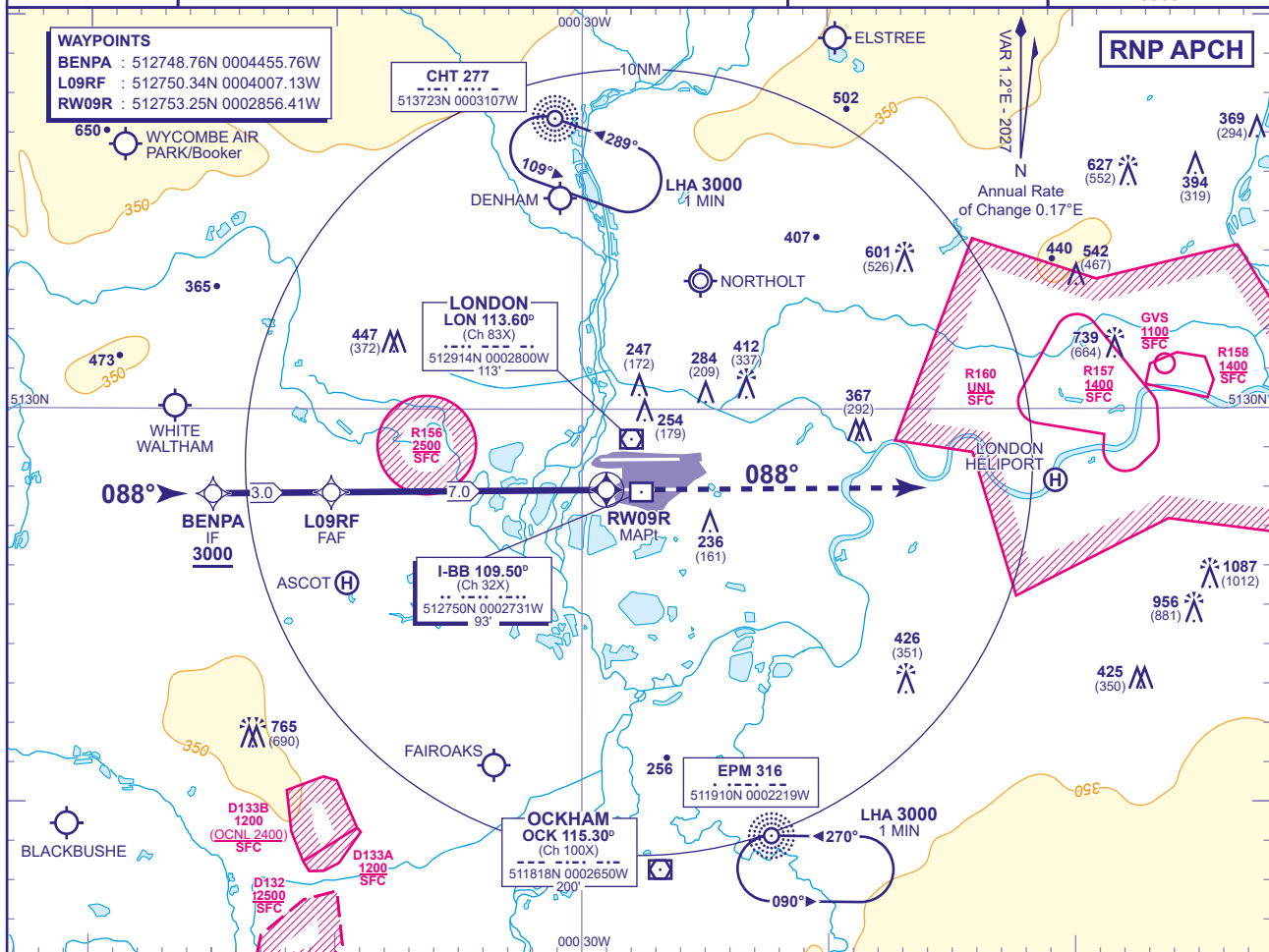
MSA 25NM ARP

APP 119.730, 120.400, 127.525, 134.980
TWR 118.505, 118.705, 124.480
RAD 125.625, 127.525
ATIS 128.080, 113.750, 117.000

HEATHROW DIRECTOR
HEATHROW TOWER
HEATHROW RADAR
HEATHROW INFORMATION

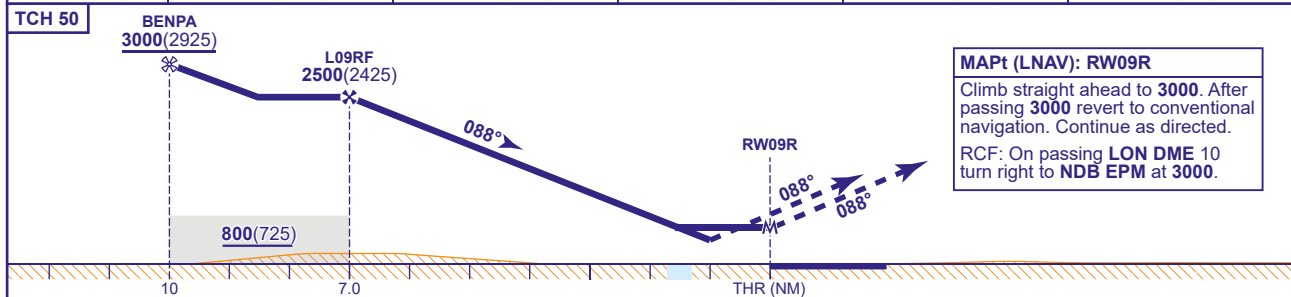
AD ELEVATION 83
THR ELEVATION 75
OBSTACLE ELEVATION 1087 AMSL (1012) (ABOVE THR)
BEARINGS ARE MAGNETIC

MIN TEMP -10°C
TRANSITION ALTITUDE 6000



RECOMMENDED PROFILE VERTICAL PATH ANGLE 3.2° (5.6%), 340FT/NM

NM to RW09R	6	5	4	3	2
ALT(HGT)	2160(2085)	1820(1745)	1480(1405)	1140(1065)	800(725)



MAPt (LNAV): RW09R

Climb straight ahead to 3000. After passing 3000 revert to conventional navigation. Continue as directed.

RCF: On passing LON DME 10 turn right to NDB EPM at 3000.

Aircraft Category	A	B	C	D	Rate of descent	G/S KT	160	140	120	100	80
OCA (OCH)	LNAV/VNAV	400(325)	410(335)	430(355)	540(465)	FT/MIN	910	790	680	570	450
	LNAV	620(545)	620(545)	620(545)	620(545)						
VM(C)OCA (OCH AAL)	Total Area	770(687)	770(687)	940(857)	940(857)						

NOTES 1 Pilots should 'Request RNP Approach' on first contact with Heathrow Director.
2 Aircraft will normally be radar vectored from the STAR Holding/Initial Approach Fixes.
3 Missed Approach Procedure and RCF use conventional navigation aids and are not available without DME LON and NDB EPM.
4 PAPI angle is 3.0°.